

Advance Programme & Race Instructions

POWERBOAT 2011 National & Club Racing Torquay, Devon

Classes Eligible: Offshore 3C, V24, OCR & CLUB
2nd – 4th September 2011



Organised By
OCRDA



Approved By

Event Communications:

Sheena Williams: +44 (0)1634 221606 Mobile: + 44 (0) 7968 034778
sheena.williams3@btinternet.com

In association with

Royal Torbay Yacht Club, Torquay Harbour Master, Torbay
Constabulary, Torbay Council, Herald Express, Living Coasts,
Imperial Hotel, HM Coast Guard, RNLI, The Bridge Group Hotels,
and English Riviera Tourist Board



IMPORTANT NOTICE

Powerboat Racing is a hazardous activity. Individuals must accept that, by engaging in active water sports such as Powerboat Racing, their physical safety may be endangered.

Anyone intending to participate in or become involved with Powerboat Racing organised by RYA Affiliated clubs either as a participant, team member or otherwise does so at their own risk and such individuals must recognise the actual and potential risks associated with their involvement, including drowning, hypothermia, and other physical injuries as well as possible death

Participants acknowledge that it is up to them personally to assess whether any event or activity on the water is too difficult for them or their crew. Individuals acknowledge that the safety of their boat and her entire management including insurance is solely their responsibility, and they are satisfied that the boat and the crew are adequate to face the conditions that may arise in the course of the race.

Entrants into the event acknowledge that scrutineering does not constitute a condition survey of the craft and it is solely their responsibility to decide whether or not to start or to continue in any powerboat race. They acknowledge that the efficiency of the helmets and racing vests worn is solely their responsibility.

Individuals on signing on to the event agree (on acceptance of their entry upon being permitted to take part in the meeting;

(i) To be bound by the conditions of the Race Entry Form, Racing Instructions and the General Competition Rules of the UIM and the RYA.

(ii) To accept the decisions of the organising committee and officials nominated by it.

(iii) To save harmless and keep indemnified:

(a) The owners of the premises upon which the meeting is held,

(b) The organising club, the sponsors and the RYA and their respective officials, servants and agents,

(c) The other boat owners, drivers, passengers or mechanics engaged in the meeting, AGAINST all actions, claims, costs, expenses and demands in respect of loss of or damage to the signatory's property or the property of his/her drivers, passengers and mechanics whether or not such loss or damage may have been contributed to or occasioned by the negligence of the said persons or bodies, their officials, servants, representatives or agents.

IMPORTANT NOTE: Persons under the age of 18 must have written authority signed by either Parent or Guardian.

THE RESPONSIBILITY FOR A TEAM'S DECISION TO PARTICIPATE IN A RACE OR TO CONTINUE RACING IS THEIRS ALONE

1 EVENT APPROVAL

This Event has been approved by the Royal Yachting Association, the National Governing Body for Offshore Powerboat Racing in the United Kingdom and Northern Ireland.

1.4 RACE ADMINISTRATION

This will be located in A Room with a View at Living Coast, Beacon Quay.

2 COMPETITORS RESPONSIBILITY

All competitors entering this event must have read RYA PB1 specifically the rules relating to the class in which they are competing. Competitors are reminded to pay particular attention to the following key areas relating to racing safety:

- a) **Start procedures**
- b) **Overtaking rules**
- c) **Flag procedures**
- d) **Emergency assist procedures**

Competitors must have also read the important notice at the front of these race instructions as well as the safety information at the back. By signing the race entry form and the RYA official signing on form at the event all competitors are bound by the rules contained in RYA PB1 2011. It is the competitors sole responsibility to decide whether or not to start or continue in a race once passed scrutineering. All competitors accept responsibility for any eventuality that may occur as a result of entering a race.

3 EVENT SECRETARY

Name: Sheena Williams
Address: The Croft, Millcroft Road, Cliffe, Rochester, Kent. ME3 7QN
Telephone: + 44 (0) 1634 221606
Mobile: + 44 (0) 7968 034778
Email: sheena.williams3@btinternet.com

4 EVENT ORGANISING COMMITTEE

Bob McCarthy, Barrie Williams, Brian Peedell, Conway Hoare, Roger Harmes, Gordon Oliver, Tim Whitehead, Kate Eldridge-Pace & Cormac O-Keefe.

5 RACE COMMITTEE

Officer Of the Day	Rory Power
Safety Officer	Steve Oaten
Race Secretary	Sheena Williams
Chief Scrutineer	Guy Child
Chief Time keeper	Carole McCarthy
Chief Marshal	Tom Downey
Local Harbour Master	Captain Kevin Mowat

6 RACE OFFICIALS

RYA Commissioner	Anne Robinson
Officer of the Day	Rory Power
Deputy OOD	Eric Tuck
Safety Officer	Steve Oaten
Race Secretary	Sheena Williams
Race Administration	Carole McCarthy, Betty Reilly, Mary Downey
Chief Scrutineer	Guy Child
Scrutineer/s	Andy Nelves, Norman Taylor
Chief Marshal	Tom Downey
Crane Manager	Toby Taylor
Chief Time Keeper/Lap Counter	Carol McCarthy
Time Keeper/ Lap Counter	Mary Downey & Betty Reilly
Medical Officer	Carl Gwinnutt
Medical facilities:	Mediwest medics
RYA Spokesperson	Anne Robinson
Media Officer:	Dave Ormiston
Race Commentary	Peter Butler

7 RACE JURY

Anne Robinson (Commissioner) + 2

8 RACE STATUS

Powerboat 2011 Club National

9 LICENCE STATUS

Club: RYA Event Licences or better for all crew – minimum 2 per boat.

National: RYA National Licences for all competitors.

International: International Provisional Licences or better

Minimum Age: Minimum Age Limit as Per PB1 Class Rules

NB// Event Licence Requirements as per PB1, please note changes for 2011. For competitors who do not hold an RYA Full licence a maximum of 2 Event Licences with medical Self Declaration or an RYA Annual Powerboat Event Licence

10 RULES AND REGULATIONS:

The races will be run under current rules as stated in RYA PB1 2011 together with these Race Instructions and any other instructions issued before or at Drivers' Briefings or in Race Bulletins.

The Organisers reserve the right to change these Instructions at any time for safety reasons, provided that any change will be in accordance with the current rules. Any changes will be notified to competitors in a Race Bulletin and, if possible, announced at Drivers' Briefing.

Organisers have the right to refuse any boat which they consider unsuitable and/or which does not conform to the requirements of the present Rules.

Any infringement of the Rules or of the Race Instructions, or instructions issued at Drivers' Briefings or in race Bulletins may lead to disqualification or other penalties being applied by the organising club.

11 TIMETABLE

Saturday 3 September 2011 – RACE 1 PB2011		
Race Administration open	08:45 hrs	
Signing In & Race Administration	09:00 hrs	10:30hrs
Scrutineering	09:30 hrs	13:00 hrs
Safety Briefing	10:30 hrs	10:45 hrs
DRIVERS BRIEFING – RACE 1 (PB2011) 3b Race2 & 3	11:00 hrs	11:30 hrs
Launching / Recovery	11:30 hrs	13:30 hrs
Practise by Arrangement with OOD	11:30 hrs	12:30 hrs
Commentators Fly Past	12:40 hrs	12:55hrs
3B World Championship - RACE 2 START	13:00 hrs	14:30 hrs
Winners Parade on Water	14:35 hrs	14:40 hrs
Podium Presentations – Race 2 – Haldon Pier	14:50 hrs	14:55 hrs
National Racing: 3C, OCR & CLUB	15:00 hrs	16:00 hrs
Post Race Scrutineering	15:00 hrs	17:30 hrs
Social at The Royal Torbay Yacht Club	19:30 hrs	00:00 hrs
Sunday 4 September 2011 – RACE 3		
Race Administration Opens	09:00 hrs	
Signing In & Race Administration	09:15 hrs	10:30 hrs
Scrutineering	09:30 hrs	13:00 hrs
Safety Briefing	10:30 hrs	10:45 hrs
DRIVERS BRIEFING – Update (All)	11:00 hrs	11:30 hrs
Launching / Recovery	11:30 hrs	13:30 hrs
Practise by Arrangement with OOD	11:30 hrs	12:30 hrs
Commentators Fly Past	12:45 hrs	12:55hrs
3B World Championship - RACE 3 START	13:00 hrs	14:00 hrs
Winners Parade on Water	14:10 hrs	14:15 hrs
Podium Presentations – Race 3 – Haldon Pier	14:20 hrs	14:25 hrs
National Racing: 3C, OCR & CLUB	15:00 hrs	16:00 hrs
Post Race Scrutineering	15:00 hrs	
Prize Giving – RTYC	18:00hrs	18:30hrs

Tide Times (BST)	High		Low		High	
Thursday 1 September 2011	09.10hrs	5.2m	14.40hrs	0.5m	21.30 hrs	5.3m
Friday 2 September 2011	09:50hrs	- 5.1m	15.30 hrs	0.7m	22.10 hrs	5.0m
Saturday 3 September 2011	10:30 hrs	- 4.8m	16.10 hrs	1.1m	22:50 hrs	4.7m
Sunday 4 September 2011	11:10 hrs	- 4.5m	17:00 hrs	1.5m	23:40 hrs	4.3m

12 RACE ADMINISTRATION

Room with a View' Living Coasts, Torquay Harbourside, Beacon Quay, Torquay, Devon. TQ1 2BG.

Mobiles: + 44 (0) 7968 034778 & +44 (0) 7738 637912

13 REGISTRATION

On arrival at the race site, all crew members must report immediately to the Race Administration and shall sign the RYA indemnity form. Crew members must produce all documentation required under RYA Class Rules including **a copy of the 2011 PB1 Class rules for the class they are racing in**. Crews not in possession of the correct paperwork will not be allowed to race.

14 PIT AREAS, PARKING & SPECIAL CONDITIONS

WET PITS: Torquay Harbour
DRY PITS: Haldon Pier Torquay

15 FUELLING ARRANGEMENTS

All Boats must arrive fully fuelled and ready to race

Refuelling is ONLY permitted in the designated Fuel Pit Area.

All smoking of any type is prohibited in both pit and launching areas.

This must be adhered to at all times, offenders will be penalised.

16 PRE-RACE SCRUTINEERING

In accordance with Class specific rules in PB1 2011

17 LAUNCHING

Launching is the boat crew's responsibility and should not be undertaken before scrutineering, unless otherwise stated.

LAUNCHING BY CRANE: The Crane will be located on Haldon Pier and boats will be directed by the Chief Marshall in accordance with the event time table. The Crane will be available on Thursday 1st Saturday 3rd & Sunday 4 September 2011 as per event time table

LAUNCHING ON SLIPWAY: This will be available from Thursday 1st September for crews wishing to practise by arrangement. Boats will be directed by the Chief Marshall in accordance with the event time table

Competitors are reminded to comply with all local regulations concerning the use of the slipway. Details of the marshalling area and procedures will be given at drivers briefing. All class specific rules governing launching and recovery apply at all times

18 OFFICIAL PRACTICE ARRANGEMENTS

Official Practice as per timetable confined to lap "A" travelling at all times around the course in an anti clockwise direction.

All usual race procedures will apply.

There will be a mandatory Commentator's fly past prior to the start of the race, full details of which will be explained at Drivers Briefing. Boats will be released from the Muster Area at intervals to sight the first turn buoy, then running via Marks 2, 3, 4 returning to muster for the commencement of the start procedure. Further details will be described at Drivers Briefing.

19 DRIVERS BRIEFING

Mandatory Drivers Briefing will take place in the: 'A Room with a View', Living Coast

Signing-in will commence 15 minutes before the Briefing. All crew for each race boat must sign in to the briefing by the start time and attend the entire briefing. A Roll Call will be held. The start of drivers briefing marks the end of the eligibility protest period and the Jury members will be introduced.

Penalty for absence will be disqualification from starting the race or other penalties as defined in Class Rules or by the race organisers. Breathalyser and Drug tests may be given.

20 NOISE AND SPEED RESTRICTIONS

Competitors must obey all local regulations and Bye Laws relating to excessive speed and noise. All competitors are requested to refrain from starting their engines unless absolutely necessary before proceeding to the race or official practice sessions. Failure to observe local regulations will result in penalties being applied.

Mandatory Instructions from the Harbour Master. Speed, dead slow at all times in Torquay Harbour until clear of the Fairway Buoy. The wash from a boat at speed might endanger other craft or property and offenders are liable to prosecution. Maximum Speed is 5 knots. This rule must be adhered to at all times and anyone seen contravening this will be subject to disqualification and possibly disciplinary action.

21 ROLLING STARTS, STANDING STARTS, BEACH STARTS, CLASS SPECIFIC STARTS

Full details of the starting procedure will be given at Drivers Briefing however all class specific starts are explained in RYA PB1 2011

22 COURSE DETAILS

Charts

IMRAY 2300.7

Chart Datum Reference WGS 84 Datum

A schematic drawing of the course is provided for your assistance. It is not to be used as a chart for navigational purposes.

Course Marks

A full description of each course mark will be given at drivers' briefing, including the start run and any Exclusion Zones.

RACE DISTANCE PB 2011 CLASSES

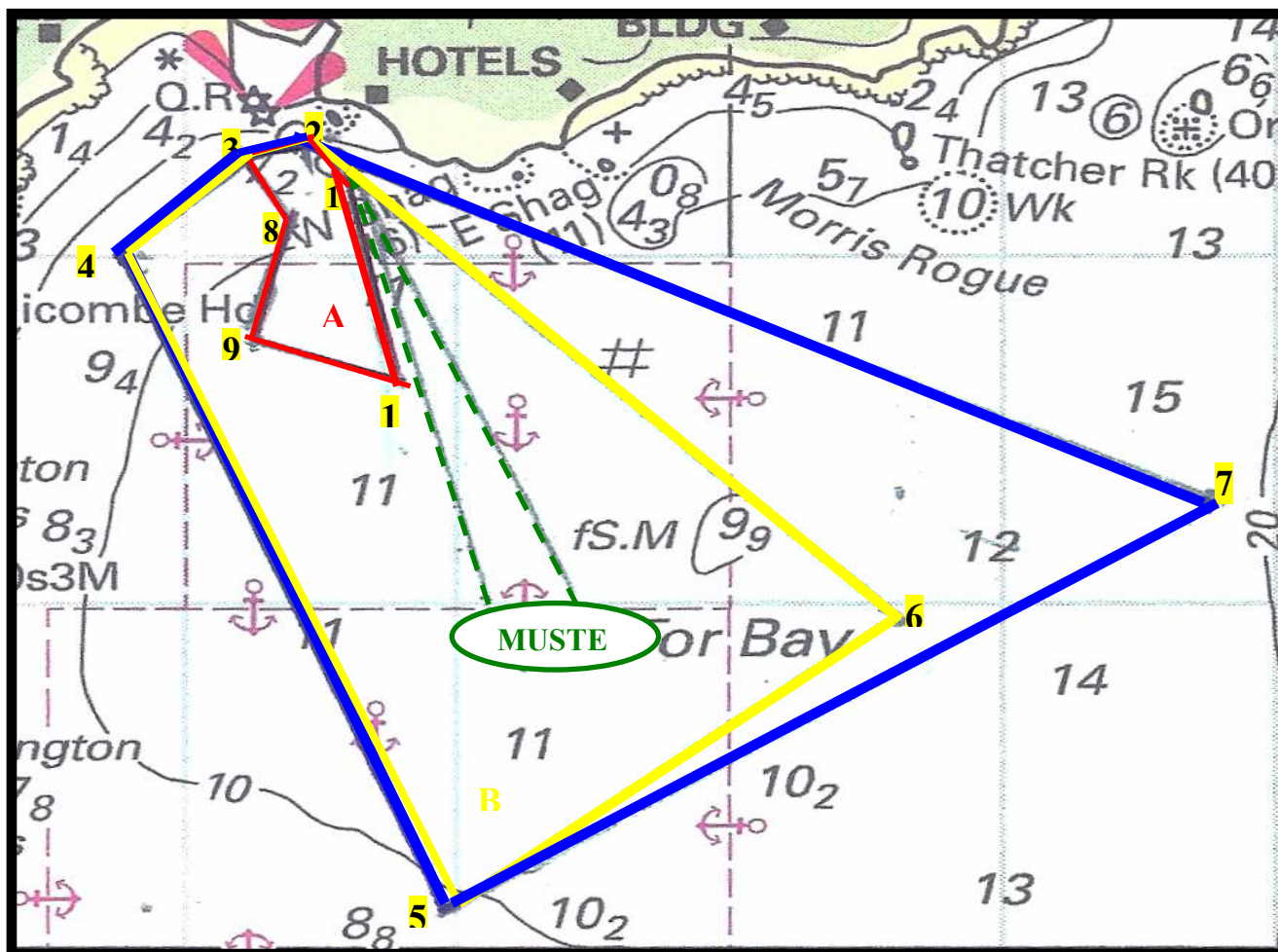
Muster Area

As marked on schematic drawing

RACE 1 PB2011 - Saturday 3 rd September	Lap "B"	Rolling Start	50min + 1 Lap
RACE 2 PB2011 - Sunday 4 th September	Lap "A"	Standing Start	2 x 25min + 1 Lap

MARKS OF THE COURSE FOR National & CLUB Racing

Mark	Latitude	Longitude	Mark Description	Leave to
1	50° 27.150'N	3° 31.320'W	Yellow Inflatable	Port
2	50° 27.340'N	3° 31.600'W	Orange/Black Chequered Inflatable	Port
3	50° 27.330'N	3° 31.830'W	Yellow Inflatable	Port
4	50° 26.880'N	3° 32.340'W	Yellow Inflatable	Port
5	50° 25.070'N	3° 30.490'W	Yellow Inflatable	Port
6	50° 25.820'N	3° 29.350'W	Yellow Inflatable	Port
8	50° 27.140'N	3° 31.650'W	Orange Inflatable	Starboard
9	50° 26.660'N	3° 31.780'W	Yellow Inflatable	Port
10	50° 26.640'N	3° 31.340'W	Yellow Inflatable	Port
LAP			DISTANCE	
A			2.0nm	
B			6.14nm	



23 FLAG SIGNALS

All flag signals are fully described in RYA PB1 2011 Class specific rules however competitors are reminded of the following key flag meanings

- **YELLOW FLAG** – on seeing the yellow flag signal from an official boat, competitors **MUST ACKNOWLEDGE THE SIGNAL** proceed with caution, not overtake other race boats whilst in the area of the incident and keep clear of any danger areas. Yellow lights may be used by the start boat in conjunction with yellow flags. These lights shall have the same meaning as a yellow flag. Any competitor who ignores or abuses the yellow flag signal may be penalised.
- **RED FLAG** – on seeing the red flag signal, all boats shall stop racing immediately, proceed at slow speed to the Muster area and await further instruction.

Infringement of any of the above may result in disqualification and/or yellow card and/or a time penalty or any combination.

If a competitor misses 2 red flags in any one race they will immediately be disqualified and referred to the RYA for further disciplinary action.

BLACK FLAG - any race boat deviating from the course into restricted areas, or displaying conduct deemed to be unsporting or dangerous may be shown the black flag along with its race boat number the next time it passes the start boat and will be disqualified from the race. Disqualified boats must return to wet pits area, safely moving off the course and avoiding any interference with the race or other race boats. Disqualified boats will not be awarded points for that race and may be fined.

24 POST-RACE DECLARATION:

The Driver and Co-Driver must sign off at Race administration as soon as possible after their finishing time. Failure to do so within one hour of the finish of the race will incur exclusion from the results.

Protests against another competitor must be lodged by signing off time.

All Crew Members must report to Race Administration before the end of the event to sign off and collect race documentation.

25 POST-RACE SCRUTINEERING:

Crew members must be available with their craft for post-race scrutineering if required up to one hour after the posting of the Results. One or more engines may be checked and fuel sampling may take place.

26 PENALTIES

Race Organisers may apply penalties referred to in class rules as well as additional penalties listed below

Penalty for first missed mark is 1 Lap (This will be the lap the mark was missed on)

27 PROTESTS

In accordance with class specific rules in PB1 2011

A protest fee of £100 is applicable to this event

28 PRIZE GIVING:

Podium presentations will take place at Haldon Pier as per event time table.

Prize-giving will take place as per timetable in the RTYC

29 ADVERTISING

Tobacco Advertising is not permitted by law. The organisers will have the right to instruct the removal of any offensive material. Boats may be asked to carry advertising decals. Your co-operation in this matter would be greatly appreciated.

30 ACCOMMODATION

Hotels in Torquay are offering packages for crews here are some who are participating with the event; email:

torquayimperialgm@barcelo-hotels.co.uk ; or <http://www.barcelohotels.co.uk> stay@robinhillhotel.co.uk stay@meadfoot.com or www.meadfoot.com ; or www.swcottages.co.uk

SAFETY INFORMATION

SAFETY TAKES PRIORITY OVER RACING AT ALL TIMES

All Race Boats must observe the International Rules for the Prevention of Collisions at Sea when encountering any other Non racing craft

- A) Competitors are reminded to keep a sharp look out at all times and to take the necessary action in accordance with the IRPCS Rules.*
- B) Competitors are reminded to keep a sharp lookout at all times for any marine wildlife that may be encountered in the vicinity of the race course and take the necessary avoiding action.*
- C) Competitors are warned to remember their speed and the fact that other craft may not be fully aware or able to keep clear.*
- D) Competitors are asked to bear in mind that Official Patrol & Rescue boats have no power to insist that any craft or swimmer keep clear of the course of the race. Advice can only be given for the safety of other craft and swimmers.*
- E) International Code Flag "A" denotes "DIVERS". Competitors must give a wide clearance of at least 100mtrs.*
- F) The Course will be patrolled by Official Patrol & Rescue Boats with official Observer boats in the vicinity of certain race marks, other race marks may be observed from the shore*
- G) Any Official Patrol/Rescue boat may wave a yellow flag to give warning of imminent danger in its vicinity. Competitors seeing this signal are to acknowledge the signal, slow down to less than 15 knots and keep clear of the danger area.*